

Yellowhead Copper Project

District of Barriere

August 2025



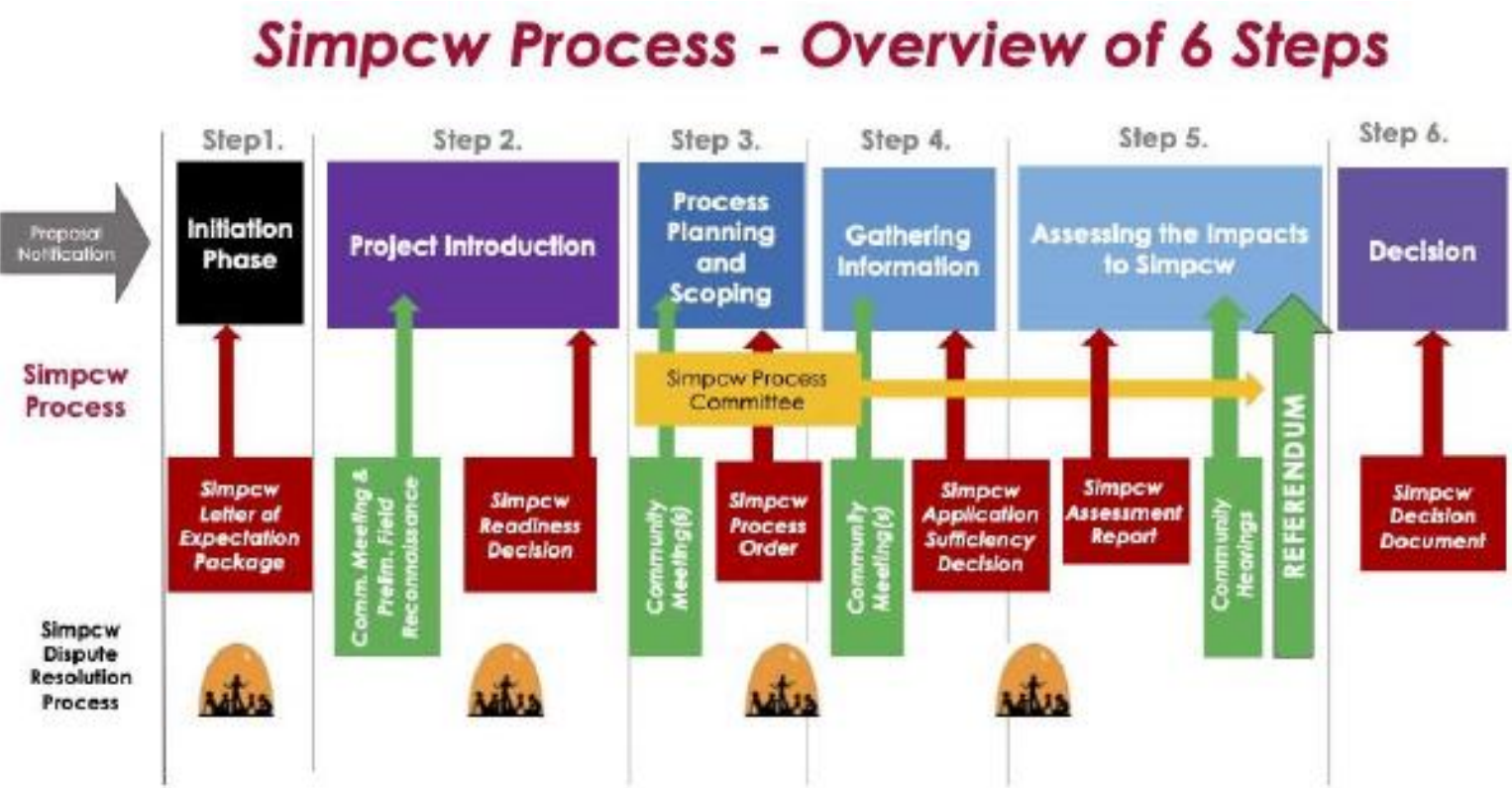
MILESTONES

- **Engagement with local and regional governments**, including TNRD, Clearwater and Barriere ongoing
- **Simpco Environmental Assessment Process and Engagement with Indigenous Nations** ongoing
- **Open Houses** were held prior to submission of the IPD, in Vavenby, Clearwater and Barriere
- **Initial Project Description IPD** was accepted by Environmental Assessment Office (EAO) and Impact Assessment Agency of Canada (IAAC)
- **Yellowhead website** was launched (www.yellowheadproject.com)
- **Technical Report Update** on the Yellowhead Copper Project released (www.tasekomines.com/properties/technical-reports/)



Simpcw First Nation

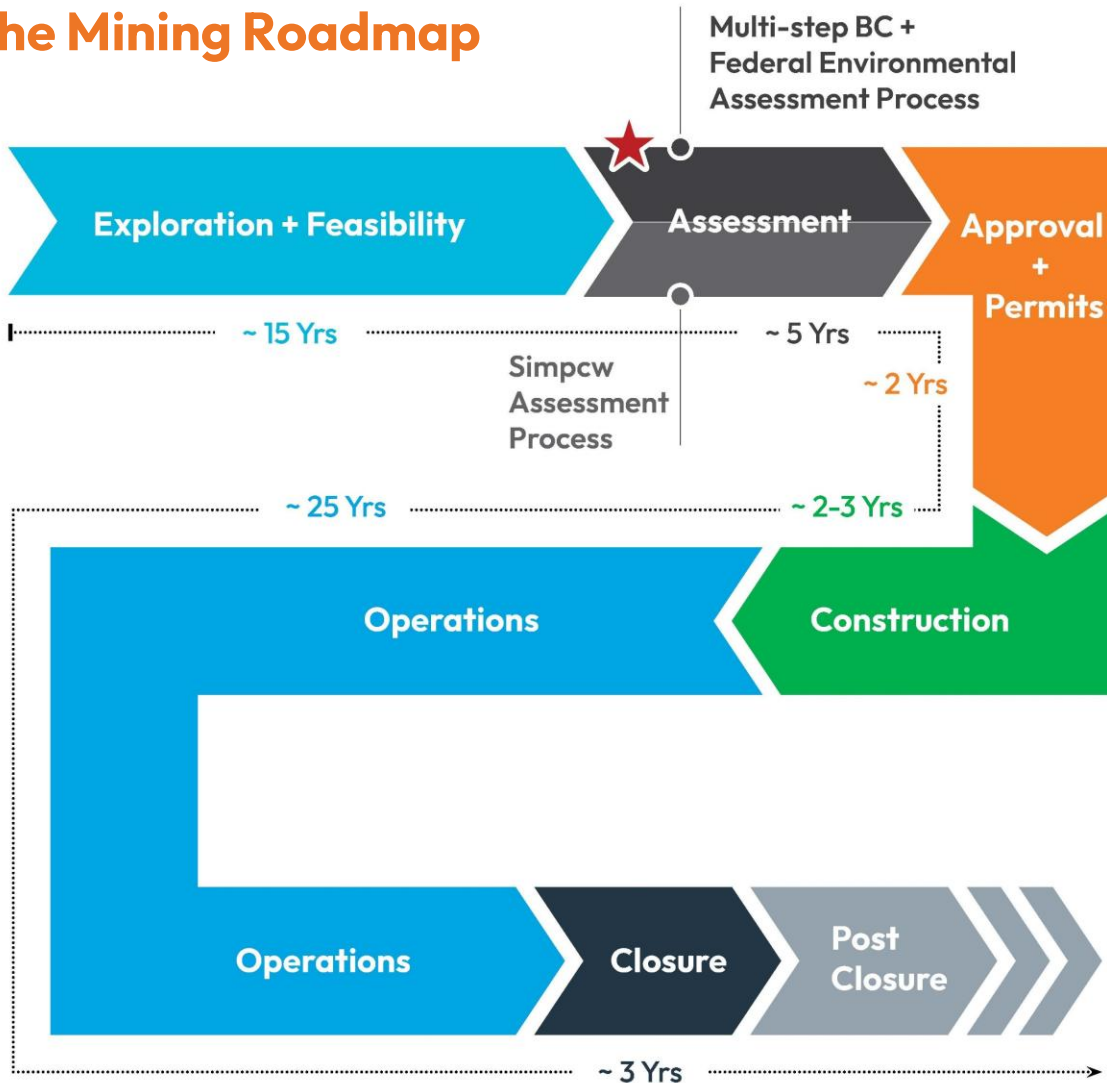
Simpcw Assessment Process



- The Yellowhead Project entered the Simpcw Assessment Process in 2024
- Indigenous consent-based process
- Ensures that Project assessment appropriately considers and respects Simpcw Rights, interests, laws, values, priorities and culture
- The Yellowhead Project is currently in Step 2 of the Simpcw Process

Exploration to Closure

The Mining Roadmap



Approvals required from exploration through closure from:



- Ministry of Energy, Mines, and Low Carbon Innovation
- Ministry of Environment and Climate Change Strategy
- Ministry of Forests
- Ministry of Health
- Ministry of Transportation Infrastructure

Canada

- Environment and Climate Change Canada
- Natural Resources Canada
- Fisheries and Oceans Canada
- Transport Canada

Initial Project Description (summary)

EPIC website of Environmental Assessment

Office: projects.eao.gov.bc.ca

Project overview

Indigenous
Engagement &
Simpw Process

Project Design &
Components

Workforce and
Economic Impact

Environmental &
Regulatory
Considerations

Environmental
Management

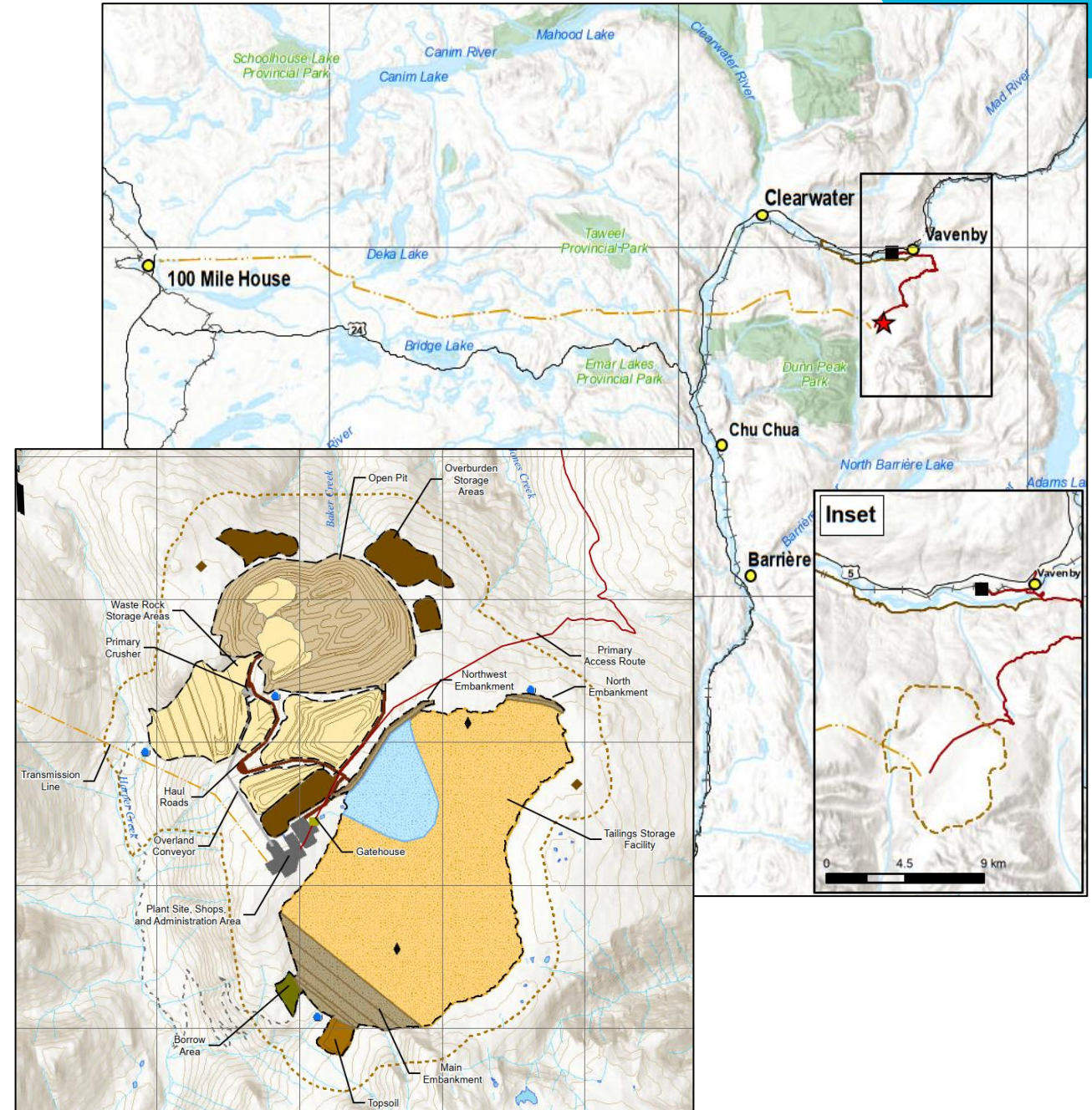
Biophysical
Environment
(Ecosystems, etc)

Project History

Project Components

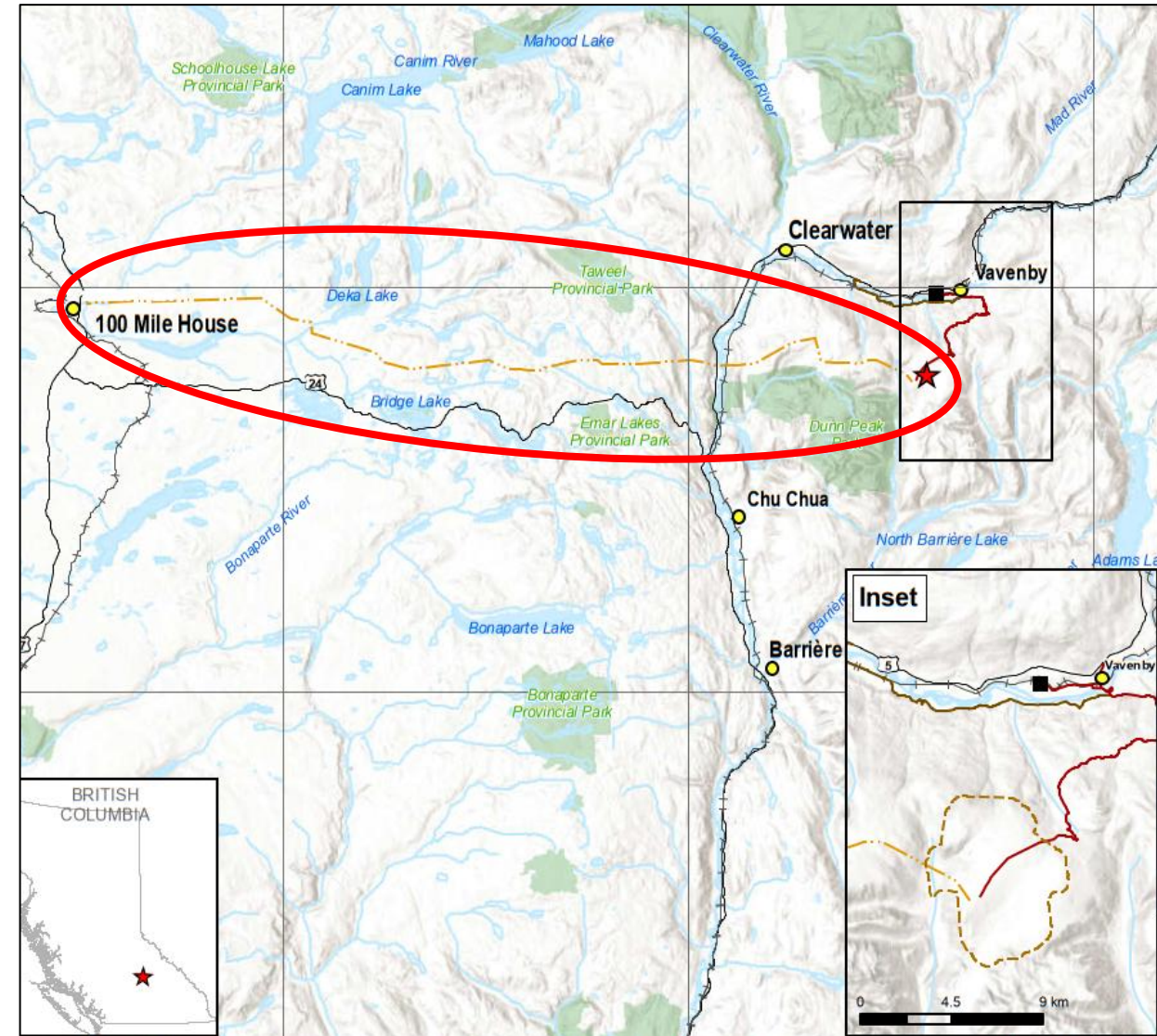
Project Site Components

- Open Pit
- Overburden, waste rock and ore storage areas
- Plant Site
 - Concentrator / Associated Infrastructure
 - Process Water Pond / Water Treatment Plant
 - Maintenance Facilities / Warehouse
 - Mine Dry / Admin Building
 - Gatehouse / First Aid
- Tailings Storage Facility
- Water Management Infrastructure



Offsite Infrastructure

- **Transmission Line:**
 - Taseko to design and permit ~110 km, 230kV overhead transmission line from 100 Mile House to site
 - Point of interconnection determined by BC Hydro, System Impact Study in progress
 - No positive or negative impacts to North Thompson Transmission Line
- **Access Routes:**
 - Primary access via Highway 5 at Vavenby along ~20 km along existing FSRs
 - Secondary access for oversized / heavy loads via Highway 5 at Birch Island
- **Rail Load-Out Facility:**
 - Former Weyerhaeuser site with rail siding
 - ~2.5 km west of Vavenby and ~25 km by road from Project site

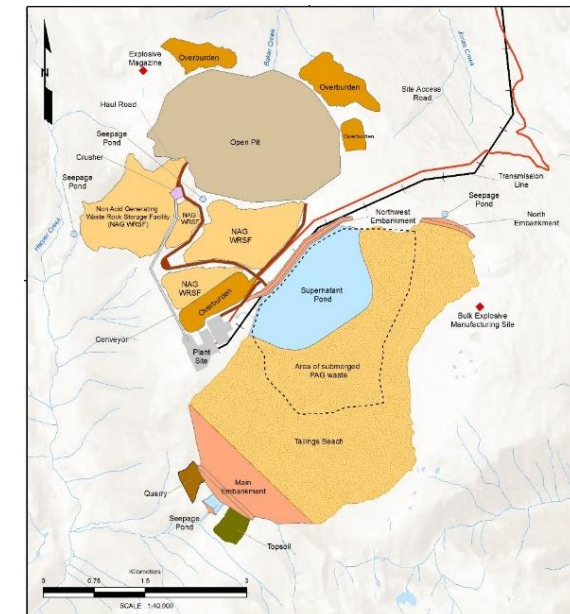
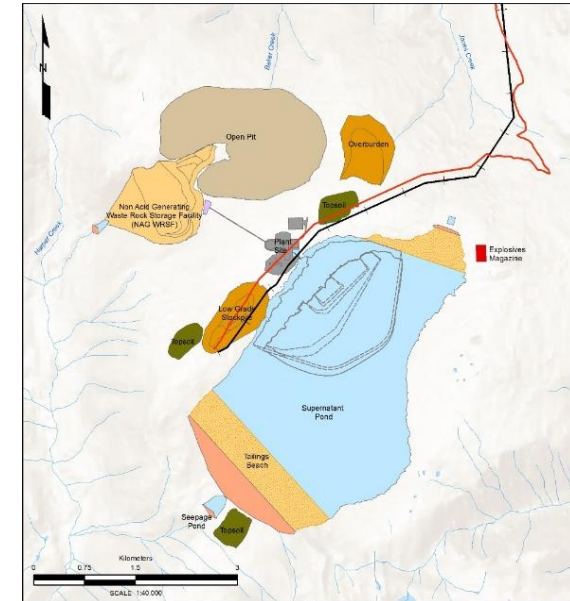


Project Design Enhancements

- Improvements to Tailings & Water Management:
 - Reduced stored water by 90% (water treatment)
 - Improved embankment design / construction methodology
 - Increased tailings beach widths
- Improvements to project design:
 - Optimized throughput, cut-off grade, pit size and phasing
 - Improved crusher / plant site location and redesigned concentrator
 - More efficient site layout to minimize disturbance
- Improvements to project economics:
 - 22% increase in recoverable copper

2014

2020



Copper Mining & Processing Summary



Drill



Blast



Load



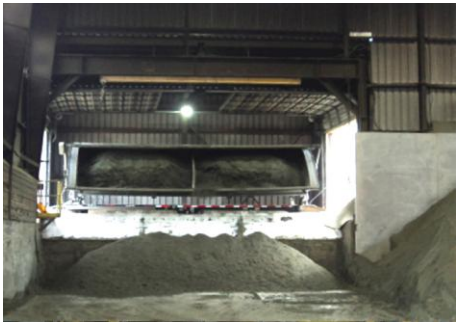
Haul



Crush



Truck



Concentrate



Float



Grind



Convey



Rail Load



Train



Ship



Smelt



Final Product

Workforce and Housing

Workforce

Project Phase	Duration (years)	Workforce Estimate (jobs)	
		Direct	Indirect and induced
Construction	Approximately 2-3	2,180	1,120
Operations	Approximately 25	590	1,120
Closure	Approximately 7	30	-
Post-Closure	Decades+	1 full-time; 4 part-time	-
Source: BCStats (2020)			

Goal will be to hire primarily from local and regional communities, with a small proportion from outside the region in BC

Construction Camp

- Full-service camp located onsite near the Plant Site to house the construction workforce
- Single storey prefabricated modular building with services such as dormitories, washrooms, kitchen and dining facilities
- Self-contained, with domestic wastes planned to be transported offsite for disposal
- Decommissioning and removal of camp from site will occur once the construction phase is complete or no longer required

Operations

- Planned that operations workforce will live in and integrate with local communities

Yellowhead Project

What We've Heard

Category	Feedback
Business and Employment	<ul style="list-style-type: none">• Opportunities for local contractors• Jobs, training and education opportunities for community members and youth
Jobs and Training	<ul style="list-style-type: none">• Interest in understanding the need for the different job on the mine site.
Project	<ul style="list-style-type: none">• Details regarding the size of the proposed project footprint.
Infrastructure/Roads / Bridges	<ul style="list-style-type: none">• Interest regarding Vavenby and Birch Island Bridges and potential assessment needs for capacity.• Clarification whether the back access road from Barriere would be used to access site (West Saskum, Bear Creek)
Engagement	<ul style="list-style-type: none">• Information on whether Taseko is engaging with other Indigenous nations.

Yellowhead Project

Next Steps

- EAO and IAAC Open Houses
 - Virtual Open House, September 4th, 12pm-2pm
 - In-Person Open House, September 10th, Dutch Lake Community Centre, Clearwater, 4pm-7pm
- Public Comment Period
 - Aug 5 – Sep 15th
 - On EPIC website, Yellowhead Copper Project, engage.eao.gov.bc.ca/Yellowhead-EE
- Coffee and Conversation with Yellowhead Team
 - Third Wednesday of Every Month 10:00- 12:00 pm, next Date Aug 20th
- 2025 Site Investigation Program and Environmental Baseline Studies ongoing all summer



EPIC.engage

engage.eao.gov.bc.ca

Yellowhead Copper - Early Engagement

The Yellowhead Copper project, a proposed copper mine located near Clearwater and Vavenby B.C., is in the early engagement phase of the environmental assessment process. British Columbia's Environmental Assessment Office (EAO) is seeking public feedback on the Initial Project Description, which outlines the proposed location and activities.

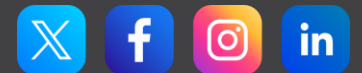
Engagement Dates: Aug 05, 2025 to Sep 15, 2025

Visit engage.eao.gov.bc.ca/Yellowhead-EE and click

Share Your Thoughts



Thank You!



tasekomines.com